



MATT REYNOLDS

LIGHTING ◦ SOUND ◦ DIGITAL MEDIA





# One Flew Over The Cuckoo's Nest

By Dale Wasserman

Michigan State University

Directed by Rob Roznowski

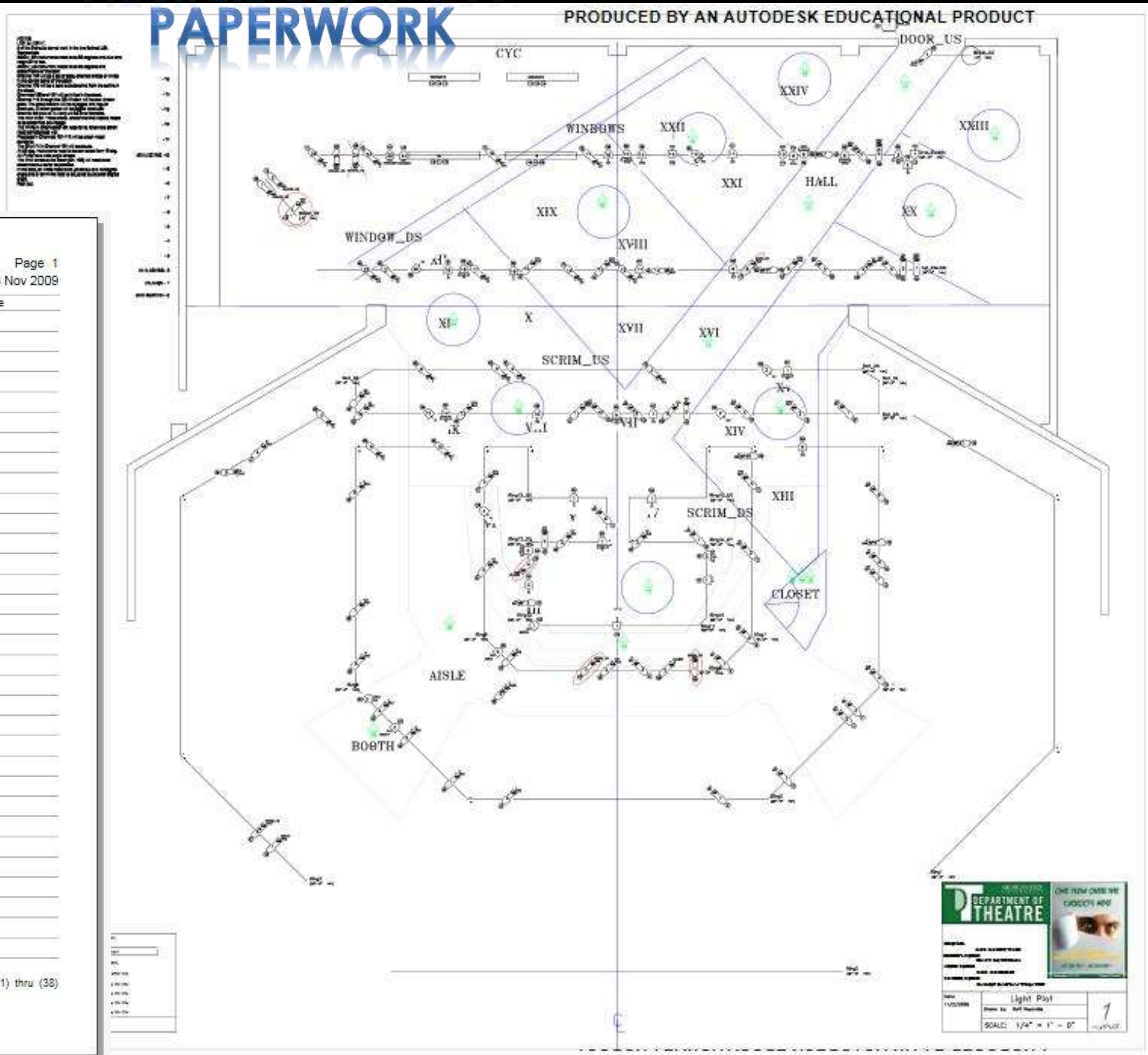
Lighting Design: Matt Reynolds

Scene Design: Rob Odorisio

## DESIGN PROCESS:

### PAPERWORK

PRODUCED BY AN AUTODESK EDUCATIONAL PRODUCT



#### One Flew Over The Cu... CHANNEL HOOKUP

Page 1  
08 Nov 2009

Channel	Dim	Position	U#	Typ/Acc/Watt	Purpose	Color and Template
(1)		Ring4	3	SF36_ERS 575w	I	R07
(2)		Ring4	1	SF26_ERS 575w	II	R07
(3)		Ring5	1	SF26_ERS 575w	III	R07
(4)		Ring4	2	SF26_ERS 575w	IV	R07
(5)		Ring7	1	SF36_ERS 575w	V	R07
(6)		Ring8	3	SF36_ERS 575w	VI	R07
(7)		Ring7	3	SF36_ERS 575w	VII	R07
(8)		Ring7	2	SF26_ERS 575w	VIII	R07
(9)		Ring12	2	SF36_ERS 575w	IX	R07
(10)		Ring10_DS	1	SF26_ERS 575w	X	R07
(11)		Ring12	6	SF26_ERS 575w	XI	R07
(12)		Slot_DS	10	SF26_ERS 575w	XII	R07
(13)		Ring4	4	SF36_ERS 575w	XIII	R07
(14)		Ring4	6	SF26_ERS 575w	XIV	R07
(15)		Ring4	6	SF36_ERS 575w	XV	R07
(16)		Ring4	8	SF26_ERS 575w	XVI	R07
(17)		Ring7	4	SF36_ERS 575w	XVII	R07
(18)		Slot_DS	2	SF26_ERS 575w	XVIII	R07
(19)		Slot_DS	3	SF26_ERS 575w	XIX	R07
(20)		1st_Electric	2	SF26_ERS 575w	XX	R07
(21)		Slot_DS	1	SF26_ERS 575w	XXI	R07
(22)		1st_Electric	5	SF26_ERS 575w	XXII	R07
(23)		1st_Electric	1	SF26_ERS 575w	XXIII	R07
(24)		1st_Electric	3	SF26_ERS 575w	XXIV	R07
(31)		Ring5	2	SF26_ERS 575w	I	R53
(32)		Ring8	1	SF26_ERS 575w	II	R53
(33)		Ring8	2	SF26_ERS 575w	III	R53
(34)		Ring9	1	SF26_ERS 575w	IV	R53
(35)		Ring8	4	SF26_ERS 575w	V	R53
(36)		Ring8	6	SF26_ERS 575w	VI	R53
(37)		Ring9	3	SF26_ERS 575w	VII	R53
(38)		Ring8	7	SF26_ERS 575w	VIII	R53

DEPARTMENT OF THEATRE

ONE FLEW OVER THE CUCKOO'S NEST

Light Plot

SCALE: 1/4" = 1' = 0"

1

*One Flew Over The Cuckoo's Nest*

By Dale Wasserman

Michigan State University

Directed by Rob Roznowski

Lighting Design: Matt Reynolds

Scene Design: Rob Odorisio

Costume Design: Karen Kangas-Preston

# THE DESIGN COMES TO LIFE



*One Flew Over The Cuckoo's Nest*

By Dale Wasserman

Michigan State University

Directed by Rob Roznowski

Lighting Design: Matt Reynolds

Scene Design: Rob Odorisio

Costume Design: Karen Kangas-Preston

# THE DESIGN COMES TO LIFE



# Lighting & Media Design Selections

# Separate And Equal

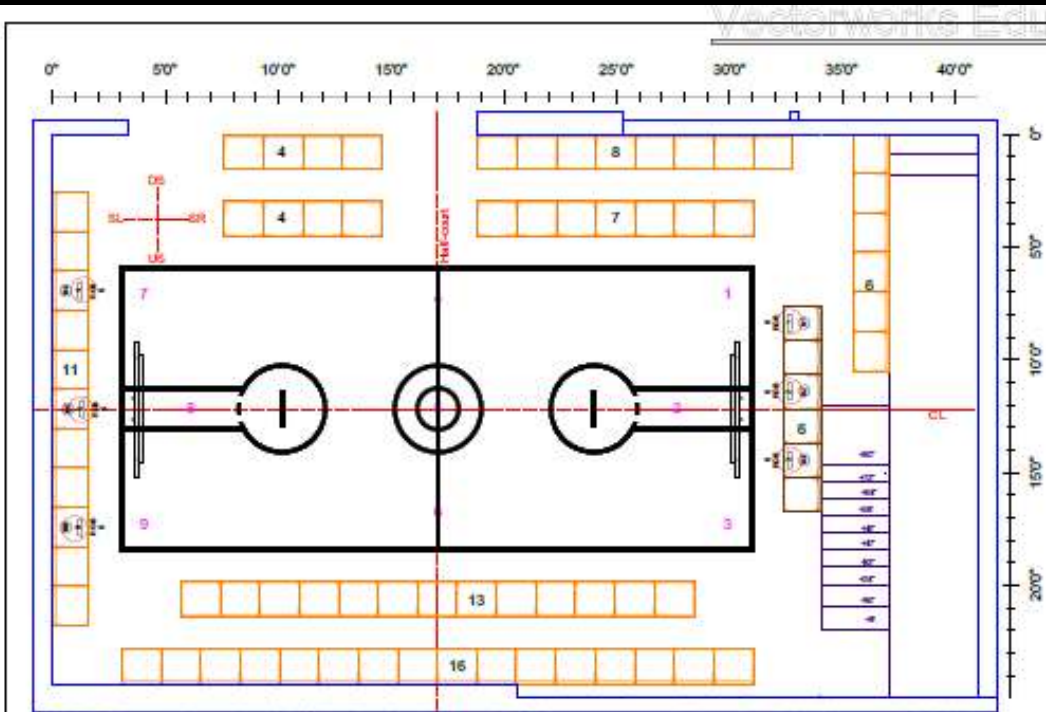


*Separate And Equal* by Seth Panitch  
University of Alabama at 59E59 (Off-Broadway)  
Director: Seth Panitch  
Lighting/Sound/Video/Scene Design: Matt Reynolds  
Costume Design: Tiffany Yeager



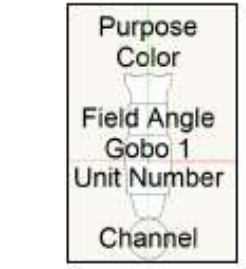
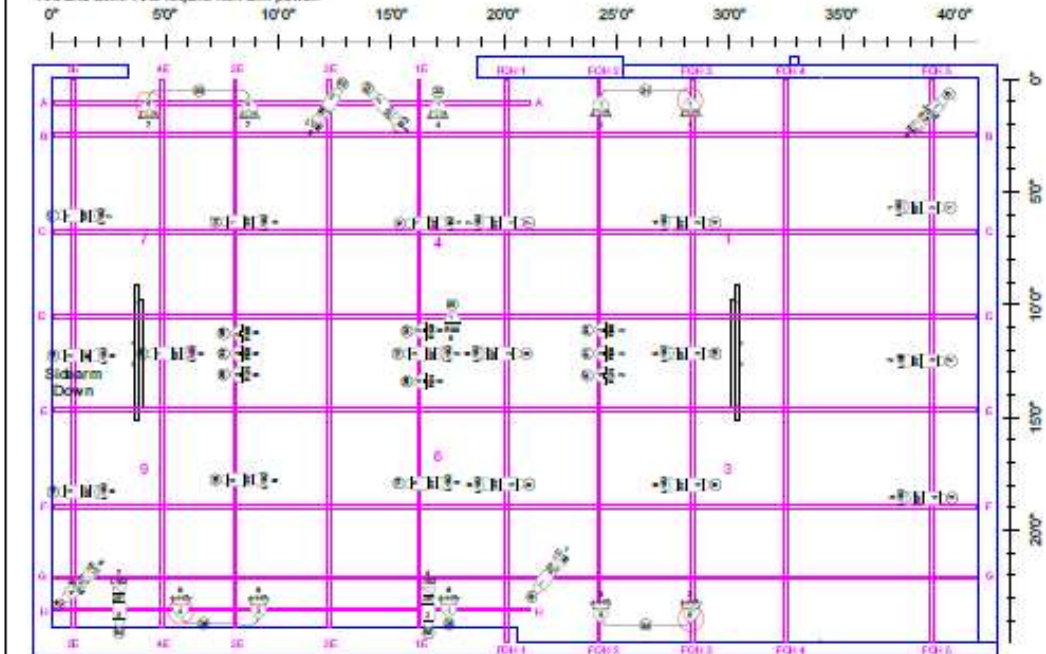


Separate And Equal by Seth Panitch  
 University of Alabama at 59E59 (Off-Broadway)  
 Director: Seth Panitch  
 Lighting/Sound/Video/Scene Design: Matt Reynolds  
 Costume Design: Tiffany Yeager



Grid 14'-9" to bottom of letter pipes (SL/SR) and top of number pipes (US/DS).  
 Paint lines are all 2" wide.  
 Court is 28'-1 3/4" wide by 12'-8 1/2" long (outer edge of boundary).  
 Half-court circles are 4'0" and 2'0".  
 TVs are 10' high to screen center, 1' from outer edge of nearest boundary; 10 degree tilt down.  
 Free throw lines are 2" wide, 1'-6" long OC.  
 All outer PARs use WFL lenses. Overage PARs use XWFL lenses.  
 PARs on DS and US walls get banded.  
 TVs and SlimPARs require non-dim power.

Warm wash: by L102; if no good, then R11.  
 Cool: L117, then R392, R70, R65.  
 Indigo: R59, then R35B, R382.  
 Red: R24, then R26, R27.  
 6 SlimPARs (from UA) go under seats SL/SR.  
 Chs 41 & 42 get A-size Backstabsers gobos.  
 4 SF PARs and 6 SlimPARs come from UA.  
 Scale: 1/4"=1'-0"

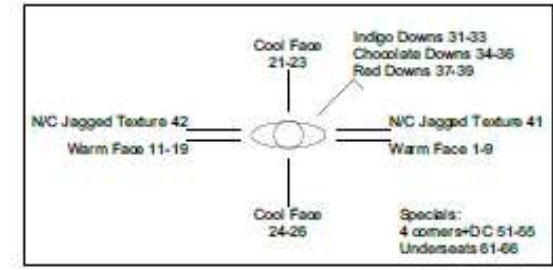


Light

Chauvet SlimPar 66	6
ETC Source4 26deg	5
ETC Source4 36deg	10
ETC Source4 50deg	10
ETC Source4 PAR WFL	10
ETC Source4 PAR XWFL	9
Static Accessory	
7.5in 4 Leaf Bam Door	10

Color Summary

Color	Size	Count
L102	6.25"	23
L117	7.5"	10
N/C	6.25"	2
R24	7.5"	3
R9B	7.5"	3
R9B	7.5"	3
RGB	N/A	6



Reynolds Separate And Equal 2018-08-27 Channel Hookup

Channel/Item	Instrument Type	Position / Num	Purpose	Color	Gobo 1	
1	ETC Source4 50deg	POH 2	1	L102		
2	ETC Source4 36deg	POH 3	2	L102		
3	ETC Source4 50deg	POH 4	3	L102		
4	ETC Source4 36deg	POH 2	4	L102		
5	ETC Source4 36deg	POH 4	5	L102		
6	ETC Source4 36deg	1E	1	7	L102	
7	ETC Source4 50deg	1E	2	8	L102	
8	ETC Source4 36deg	1E	3	9	L102	
9	ETC Source4 50deg	POH 3	5	L102		
10	ETC Source4 36deg	1E	1	1	L102	
11	ETC Source4 50deg	1E	3	2	L102	
12	ETC Source4 36deg	1E	5	3	L102	
13	ETC Source4 36deg	3E	1	4	L102	
14	ETC Source4 36deg	3E	5	6	L102	
15	ETC Source4 50deg	5E	1	7	L102	
16	ETC Source4 36deg	5E	2	8	L102	
17	ETC Source4 50deg	5E	3	9	L102	
18	ETC Source4 50deg	4E	1	5	L102	
19	ETC Source4 PAR WFL	POH 1	1	L117	Banded	
20	ETC Source4 PAR WFL	POH 2	1	L117	Banded	
21	ETC Source4 PAR WFL	A	1	4	L117 Banded	
22	ETC Source4 PAR WFL	A	5	7	L117 Banded	
23	ETC Source4 PAR WFL	A	4	7	L117 Banded	
24	ETC Source4 PAR WFL	POH 5	3	L117	Banded	
25	ETC Source4 PAR WFL	POH 5	3	L117	Banded	
26	ETC Source4 PAR WFL	H	1	6	L117 Banded	
27	ETC Source4 PAR WFL	H	4	9	L117 Banded	
28	ETC Source4 PAR WFL	H	3	9	L117 Banded	
29	ETC Source4 PAR XWFL	POH 3	2	R9B		
30	ETC Source4 PAR XWFL	1E	2	5	R9B	
31	ETC Source4 PAR XWFL	3E	3	6	R9B	
32	ETC Source4 PAR XWFL	POH 2	2	2	R24	
33	ETC Source4 PAR XWFL	D	1	5	R9B	
34	ETC Source4 PAR XWFL	3E	2	8	R9B	
35	ETC Source4 PAR XWFL	POH 4	2	R24		
36	ETC Source4 PAR XWFL	1E	4	5	R24	
37	ETC Source4 PAR XWFL	3E	4	8	R24	
38	ETC Source4 50deg	POH 1	5	N/C	JAGd	
39	ETC Source4 26deg	5E	4	5	N/C	JAGd
40	ETC Source4 26deg	F	1	1	L102	
41	ETC Source4 26deg	A	2	3	L102	
42	ETC Source4 26deg	A	3	9	L102	
43	ETC Source4 26deg	H	5	7	L102	
44	ETC Source4 26deg	F	2	4	L102	
45	Chauvet SlimPar 67	DECK 1	5	R9B		
46	Chauvet SlimPar 67	DECK 2	5	R9B		
47	Chauvet SlimPar 67	DECK 3	5	R9B		
48	Chauvet SlimPar 67	DECK 4	5	R9B		
49	Chauvet SlimPar 67	DECK 5	5	R9B		
50	Chauvet SlimPar 67	DECK 6	5	R9B		

This drawing is considered "the reproduction of use of these drawings...  
 If these contain herein are prohibited without express written consent  
 of the designer. Written dimensions override scale in case of conflict  
 information. Responsibility falls on the vendor to verify the designer of  
 any discrepancies between this drawing and actual dimensions. The  
 document represents concepts and suggestions only. The designer is  
 not responsible for the safe implementation of structural, mechanical, or  
 electrical components indicated herein. Safe implementation of this  
 drawing is the responsibility of the client and the contractor. The  
 contractor must comply with all applicable local, state, and federal  
 codes and regulations (NEC, OSHA, LSC, ADA, etc.).



**Separate and Equal**  
 By Seth Panitch

Director: Seth Panitch  
 Production Design: Matt Reynolds  
 Costume Design: Tiffany M. Yeager  
 Choreography: Lawrence Jackson  
 General Manager: Dominic Yeager  
 Stage Manager: Amanda Harris  
 Prop Stage Manager: Meredith Parr

LightPlot Plate: 1/1  
 Scale: 1/4" = 1'-0"  
 Date: 2018-08-27

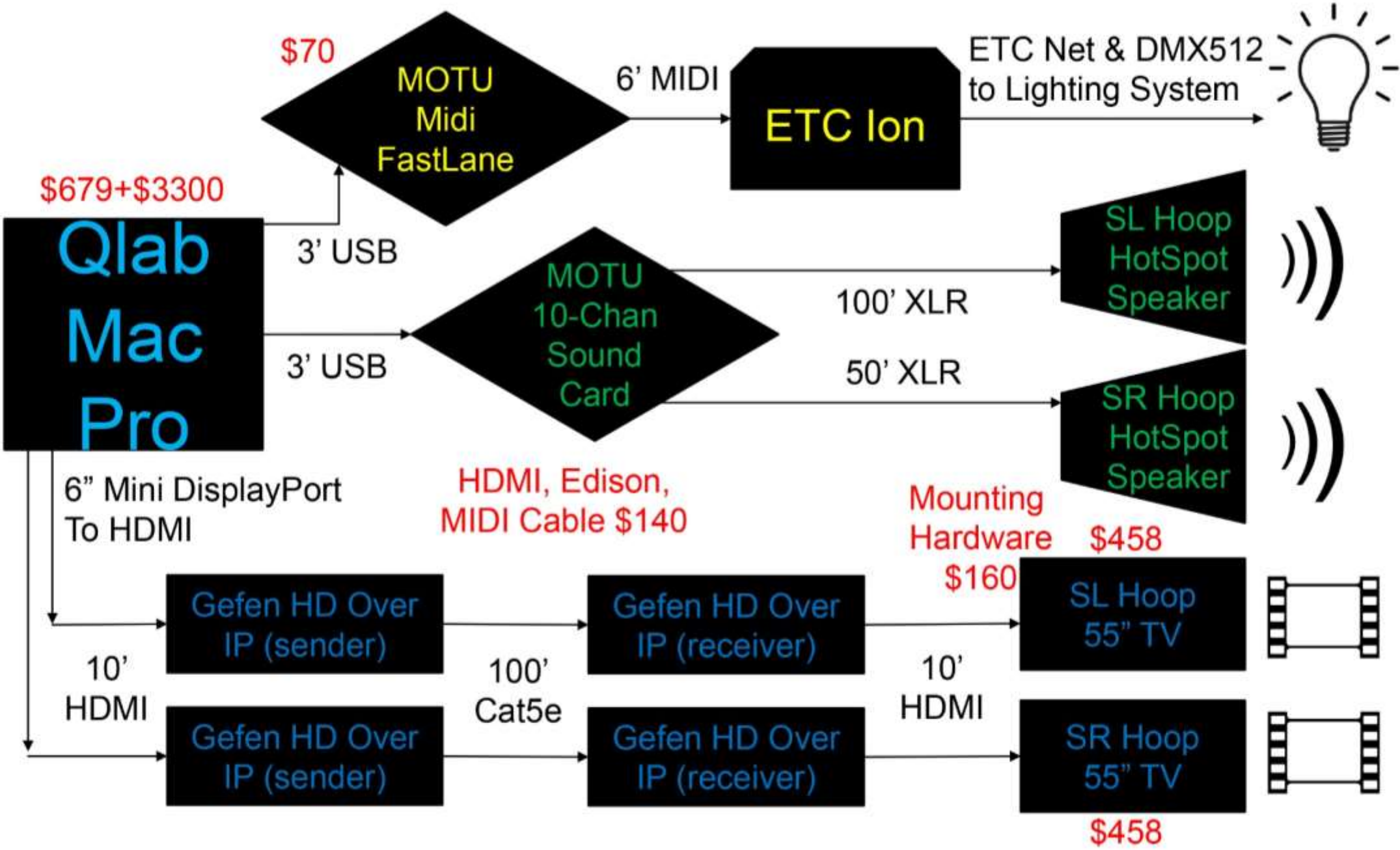
59E59 THEATERS  
 Theatre B  
 59 E. 59 St.  
 New York City, NY 10022

*Separate And Equal* by Seth Panitch  
 University of Alabama at 59E59 (Off-Broadway)  
 Director: Seth Panitch  
 Lighting/Sound/Video/Scene Design: Matt Reynolds  
 Costume Design: Tiffany Yeager

**LIGHTS**

**SOUND**

**VIDEO**



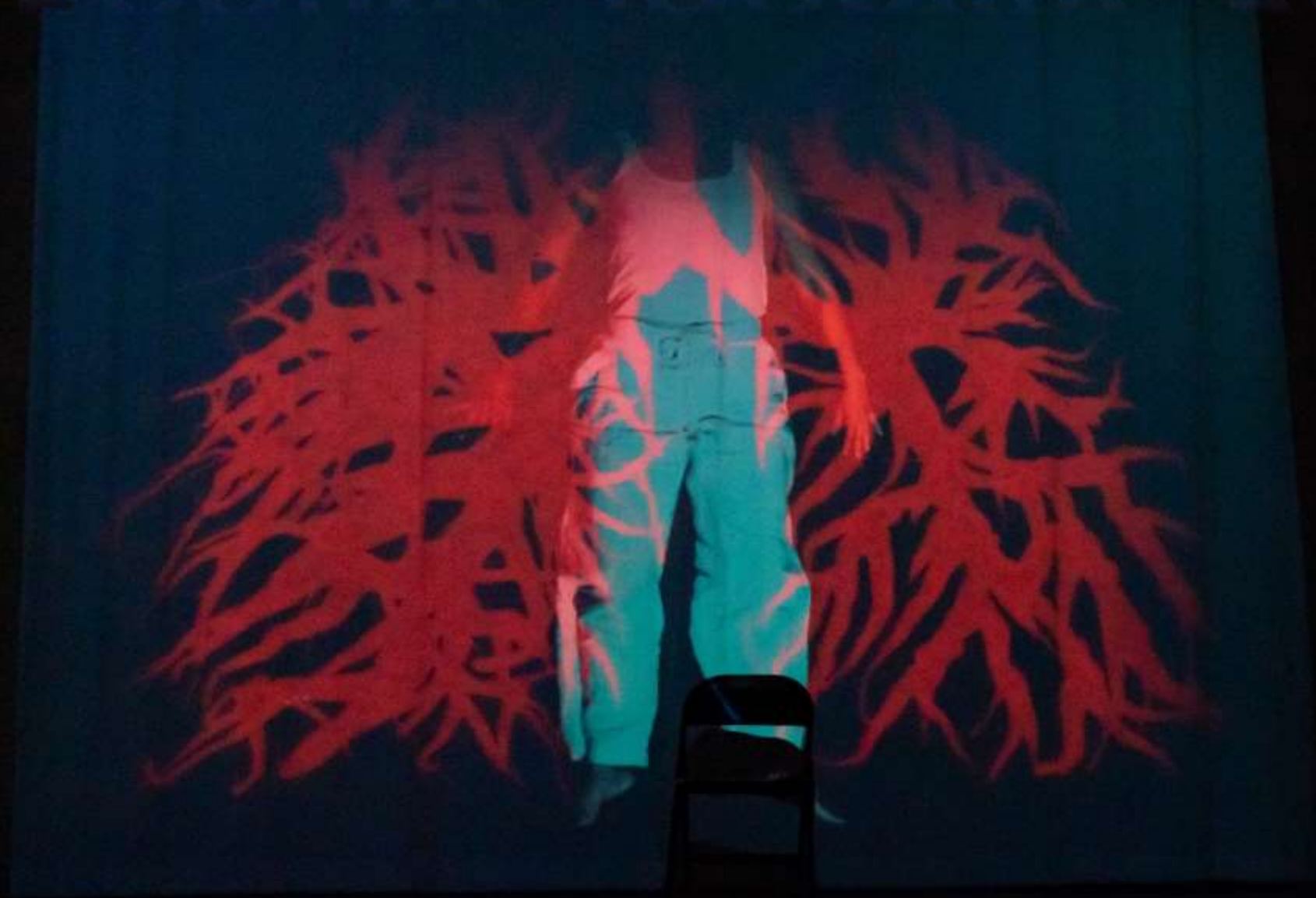
# Dido & Aeneas



*Dido & Aeneas* by Henry Purcell  
University of Alabama Huntsville  
Director: Karen Baker  
Lighting Design: Matt Reynolds  
Scene Design: David Harwell  
Costume Design: Heather Baumbach



# Beauty, Identity, Release



*Beauty, Identity, Release* by Kelley Schoger  
Dance-Forms' 76<sup>th</sup> Annual Choreographers' Showcase at  
Edinburgh Fringe Festival 2019  
Director: Rebecca Salzer  
Lighting/Sound/Video Design: Matt Reynolds



Photography by Garry Platt



# Merry Wives of Windsor



*Merry Wives of Windsor* by William Shakespeare

University of Alabama

Director: Seth Panitch

Lighting & Sound Design: Matt Reynolds

Scene Design: Valentine Callais

Costume Design: Angelica Martinez-Gamboa





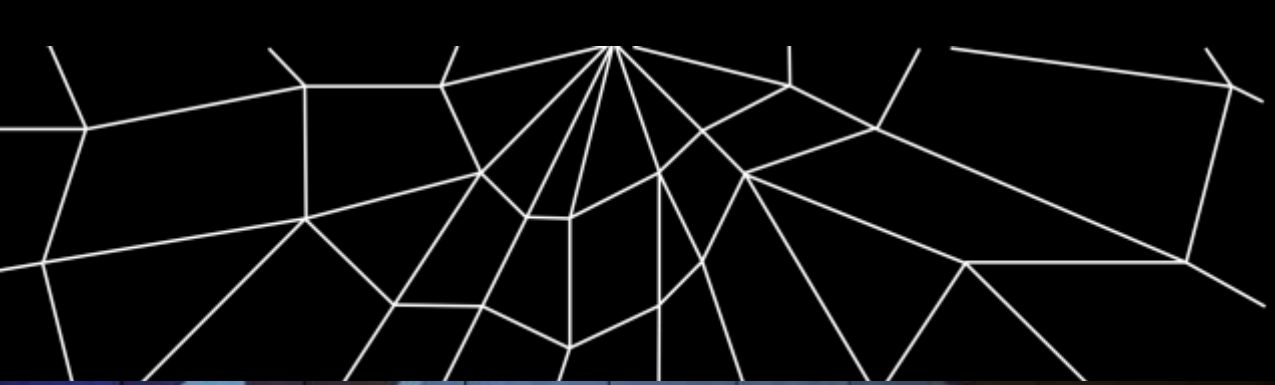
# AbunDANCE



*AbunDANCE*  
Ninja Ballet at Anita's Way (Off-Broadway)  
Choreographer: Shoko Tamai  
Projection Design: Matt Reynolds



Scene Design: Pedro Cuni  
Costume Design: Christina Giannini  
Composer: Michael Browne



*AbunDANCE*

Ninja Ballet at Anita's Way (Off-Broadway)

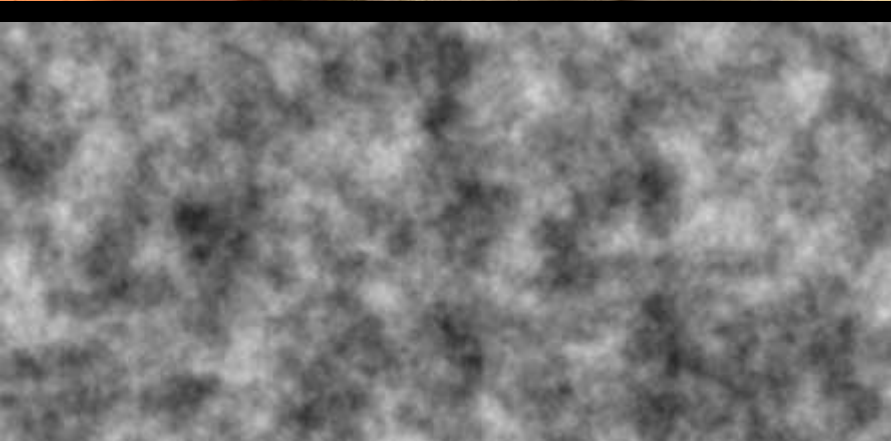
Choreographer: Shoko Tamai

Projection Design: Matt Reynolds

Scene Design: Pedro Cuni

Costume Design: Christina Giannini

Composer: Michael Browne



# August: Osage County



*August: Osage County* by Tracy Letts  
University of Alabama  
Director: Stacy Alley  
Lighting Design: Matt Reynolds  
Scene Design: Cliff Simon  
Costume Design: Ryan Rankin



# Little Women



*Little Women* by Louisa May Alcott

Book by Allan Knee, Music by Jason Howland, Lyrics by Mindi Dickstein

Indiana University

Director: Chika Ike

Media Design: Matt Reynolds

Scene Design: Rachel Rose Burke

Lighting Design: Russell Long

Sound Design: Grace Leckey

Costume Design: Erin Barnett



Mic



Video



Guests



Message



Share



Record



React



tableau



Exit



**Jo March**

Re: Submission

Alcott Silver • mail.silver.com

ding

stitch

**Fritz Bhaer**

You've been invited!

Stitch.com

**d DornDoc**



*Little Women* by Louisa May Alcott  
 Book by Allan Knee, Music by Jason Howland, Lyrics by Mindi Dickstein  
 Indiana University  
 Director: Chika Ike  
 Video Producer & Editor: Matt Reynolds

Scene Design: Rachel Rose Burke  
 Lighting Design: Russell Long  
 Sound Design: Grace Leckey  
 Costume Design: Erin Barnett

**LITTLE WOMEN: THE MUSICAL** Act I Storyboards 3/13  
 Operatic Tragedy, Better, P2-6



Storyboard panels showing character positions (B for Braxton, J for Jo) and scene descriptions:

- Panel 1: Clarissa enters, pursued by Braxton. Includes a "Pan" arrow pointing left.
- Panel 2: Rodrigo appears, almost swordfight. Includes a "Pan" arrow pointing left.
- Panel 3: "Miss March!" freeze story, fade saturation, shift up Jo & Bhaer.
- Panel 4: "You could do better" Melt/dissolve story.
- Panel 5: Bhaer exits, Jo stays small.
- Panel 6: End Better, Jo shift R and shrink, Brick fades to homey wood, TC.
- Panel 7: Christmas, Three years ago.



Inspired by Appalachian crankies and paper dolls, I built and animated shadow puppets against a scrolling landscape for the top-of-act story song



# Home



*Home*

Traveling Airs Dance Company at  
New Mexico State University

Director: Debra Knapp

Lighting & Sound Design: Matt Reynolds



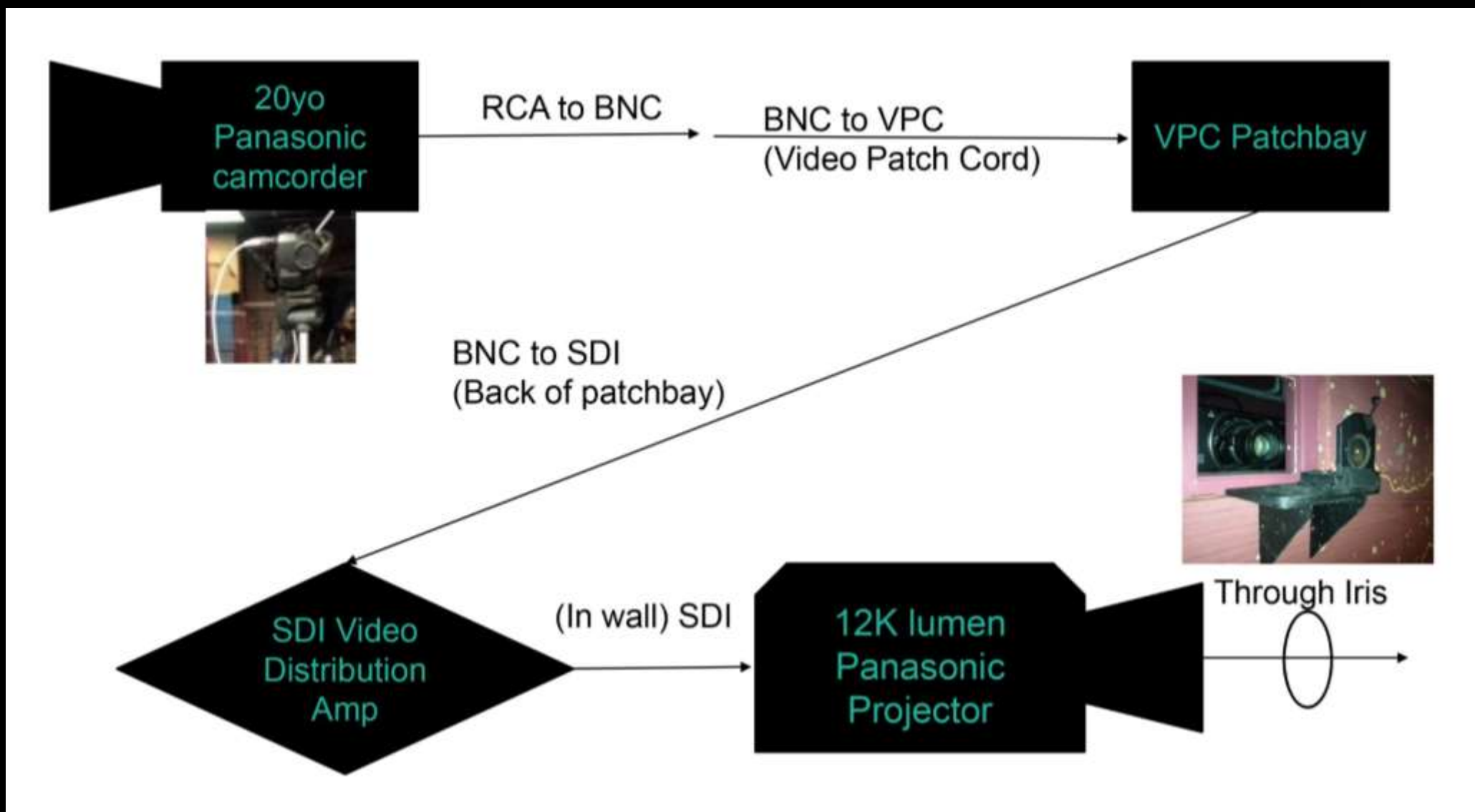
# A Christmas Carol



*A Christmas Carol* By Charles Dickens  
Adapted by Tom Smith & Roger Butterley  
American Southwest Theatre Company at  
New Mexico State University  
Directors: Robby Sciortino & Claudia Billings  
Lighting/Sound/Video Design: Matt Reynolds  
Scene Design: Jim Billings  
Costume Design: Xavier Gonzalez



*A Christmas Carol* By Charles Dickens  
Adapted by Tom Smith & Roger Butterley  
American Southwest Theatre Company at  
New Mexico State University  
Directors: Robby Sciortino & Claudia Billings  
Lighting/Sound/Video Design: Matt Reynolds  
Scene Design: Jim Billings  
Costume Design: Xavier Gonzalez



# Frankenstein



*Frankenstein*

By Mary Shelley, Adapted by R.N. Sandberg

American Southwest Theatre Company at  
New Mexico State University

Director: Tom Smith

Lighting & Sound Design: Matt Reynolds

Scene Design: Jim Billings

Costume Design: Guenevere McMahon



# Twelfth Night





*Twelfth Night*

By William Shakespeare

American Southwest Theatre Company at  
New Mexico State University

Director: Larissa Lury

Lighting & Sound Design: Matt Reynolds

Scene Design: Jim Billings

Costume Design: Deb Brunson



# Spring Dance 2015



*Spring Dance 2015*  
Contemporary Dance Theatre at  
New Mexico State University  
Director: Debra Knapp  
Lighting Design: Matt Reynolds



# The Grapes of Wrath



*The Grapes of Wrath*  
By Frank Galati  
Michigan State University  
Director: Ann Folino White  
Lighting Design: Matt Reynolds  
Scene Design: Zac Campbell  
Costume Design: Nikki Schartzer



# Voluble



*Voluble*  
Michigan State University  
Choreography: Jin-Wen Yu  
Artistic Director: Sherrie Barr  
Lighting Design: Matt Reynolds  
Projection Design: Alison Dobbins  
Costume Design: Eric Franzen



# The American Clock





*The American Clock*  
By Arthur Miller  
Michigan State University  
Directed by: Tony Caselli  
Lighting Design: Matt Reynolds  
Scene Design: G. Max Maxin IV  
Costume Design: April Townsend



**THANK YOU**



**MATT REYNOLDS**

---

**LIGHTING • SOUND • DIGITAL MEDIA**

**[MattReynoldsDesigns.com](http://MattReynoldsDesigns.com)**

**[matcreyn@gmail.com](mailto:matcreyn@gmail.com)**